

Atlas® Chrome Clad® / Nubian® Double Duty



- Recessed Beneath Multiple Layers of Nickel and Chrome Electroplating
- Provides Greater Resistance to Wear and Corrosion
- All Tapes Read Right to Left
- Heavy-Duty Frame Designed for Years of Rugged Use
- All Frames Include a Grounding Strap
- Plumb Bob Must be Ordered Separately

Cat. No.	UPC No.	Packaging	Bob Cut	Blade Width	Blade Length	Blade Style	Replacement Blade Cat No.	Product Weight
CN129012SF5	037103459527	Boxed	590	1/2 in	18 ft	D1	OCN129012SF5	1.60 lb
CN1290SF590	037103459534	Boxed	590	1/2 in	25 ft	D1	OCN1290SF590	1.60 lb
CN1290SME	037103001696	Boxed	590	13 mm, 1/2 in	8 m, 26 ft	D3	None	1.80 lb
CN1291SF590	037103459541	Boxed	590	1/2 in	33 ft	D1	OCN1291SF590	1.90 lb
CN1293SF5871	037103459763	Boxed	5871/2	1/2 in	50 ft	D1	None	2.30 lb
CN1293SF590	037103459558	Boxed	590	1/2 in	50 ft	D1	OCN1293SF590	2.20 lb
CN1293SDF590	037103459596	Boxed	590	1/2 in	50 ft	D2	OCN1293SDF59	2.20 lb
CN1293SMEF59	037103459602	Boxed	590	13 mm, 1/2 in	15 m, 50 ft	D3	OCN1293SMEF5	2.30 lb
CN1294SF5871	037103459770	Boxed	5871/2	1/2 in	66 ft	D1	None	2.70 lb
CN1294SF590	037103459565	Boxed	590	1/2 in	66 ft	D1	OCN1294SF590	2.60 lb
CN1294SMEF59	037103459619	Boxed	590	13 mm, 1/2 in	20 m, 66 ft	D3	OCN1294SMEF5	2.60 lb
CN1295SME590	037103122124	Boxed	590	13 mm, 1/2 in	23 m, 75 ft	D3	OCN1295SME590	2.88 lb
CN1295SF590	037103459572	Boxed	590	1/2 in	75 ft	D1	OCN1295SF590	2.90 lb
CN1295SME	037103440815	Boxed	5871/2	13 mm, 1/2 in	23 m, 75 ft	D3	None	2.70 lb
CN1296SF590	037103459589	Boxed	590	1/2 in	100 ft	D1	OCN1296SF590	3.56 lb
CN1296SMEF59	037103459626	Boxed	590	13 mm, 1/2 in	30 m, 100 ft	D3	OCN1296SMEF5	3.60 lb
CN1298SME590	037103104243	Boxed	590	13 mm, 1/2 in	38 m, 125 ft	D3	None	4.20 lb

Atlas® Chrome Clad®



- Recessed Beneath Multiple Layers of Nickel and Chrome Electroplating
- Provides Greater Resistance to Wear and Corrosion
- All Tapes Read Right to Left
- Heavy-Duty Frame Designed for Years of Rugged Use
- All Frames Include a Grounding Strap
- Plumb Bob Must be Ordered Separately

Cat. No.	UPC No.	Packaging	Bob Cut	Blade Width	Blade Length	Blade Style	Replacement Blade Cat No.	Product Weight
C129012SF	037103454065	Boxed	590	1/2 in	18 ft	D4	OC-129012SF59	1.60 lb
C1290SF590	037103454102	Boxed	590	1/2 in	25 ft	D4	OC1290SF590	1.80 lb
C1291SF590	037103454140	Boxed	590	1/2 in	33 ft	D4	OC1291SF590	1.90 lb
C1293SF590	037103454256	Boxed	590	1/2 in	50 ft	D4	OC1293SF590	2.30 lb
C2910MME590	037103063373	Boxed	590GM	13 mm, 1/2 in	10 m, 33 ft	D6	OC-2910MME590	1.95 lb
C2915MME590	037103091406	Boxed	590GM	13 mm, 1/2 in	15 m, 50 ft	D6	None	2.35 lb
C2920MME590	037103003386	Boxed	590GM	13 mm, 1/2 in	20 m, 66 ft	D6	None	2.70 lb
C2920MME150M	037103047168	Boxed	150 mm	13 mm, 1/2 in	20 m, 66 ft	D6	None	2.50 lb

Atlas® Nubian®



- Ideal for Gauging Clear Oils
- Etched Background
- Blade Protected By Flowed-On Epoxy Coating
- Raised Bright Steel Markings Are Clearly Legible
- All Tapes Read Right to Left, Except 3/8" X 50' Reads Left to Right
- Heavy-Duty Frame Designed for Years of Rugged Use
- All Frames Include a Grounding Strap
- Plumb Bob Must be Ordered Separately

Cat. No.	UPC No.	Packaging	Bob Cut	Blade Width	Blade Length	Blade Style	Replacement Blade Cat No.	Product Weight
1290SF590	037103454089	Boxed	590	1/2 in	25 ft	D5	O1290SF590	1.70 lb
1293SF590	037103454201	Boxed	590	1/2 in	50 ft	D5	O1293SF590	2.30 lb
1293SM590	037103441676	Boxed	590	13 mm	15 m	D7	None	1.90 lb

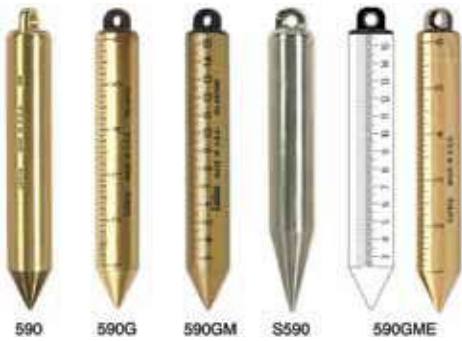
Atlas® Stainless Steel®



- Designed for Use in Highly Corrosive Solutions
- Stainless Steel Blade Resists Corrosion
- Heavy-Duty Frame Designed for Years of Rugged Use
- All Frames Include a Grounding Strap
- Plumb Bob Must be Ordered Separately
- Recommended Plumb Bob: S590
- Blade Style: D4

Cat. No.	UPC No.	Packaging	Bob Cut	Blade Width	Blade Length	Blade Style	Replacement Blade Cat No.	Product Weight
S1291F590	037103440839	Boxed	590	1/2 in	33 ft	D4	OS1291F590	1.50 lb
S1293F590	037103456823	Boxed	590	1/2 in	50 ft	D4	OS1293F590	2.00 lb

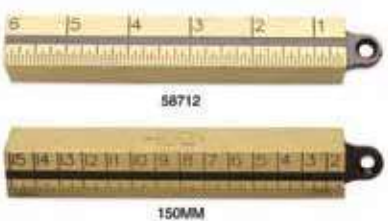
Inage Oil Gauging Plumb Bobs



- For Use in Heavy Oils
- Cylindrical Shaped
- Tapered Point Tip

Cat. No.	UPC No.	Packaging	Description	Length	Product Weight
590	037103453204	Boxed	20 oz Plumb Bob, Solid Brass Inage, Cylindrical Shape	6.75 in	1.40 lb
590G	037103453235	Boxed	20 oz Plumb Bob, Solid Brass, Graduated in Inches, Blunt Point	6.75 in	1.40 lb
590GM	037103453242	Boxed	20 oz Plumb Bob, Solid Brass, Graduated in Millimeters and Centimeters	6.75 in	1.40 lb
590GME	037103442895	Boxed	20 oz Plumb Bob, Solid Brass, Metric and English	6.75 in	1.40 lb
S590	037103460134	Boxed	20 oz Plumb Bob, Stainless Steel, Cylindrical Shape	6.75 in	1.20 lb

Outage Oil Gauging Plumb Bob



- Square Shaped Solid Brass Bob
- Eye Milled From Solid Brass Block (Not Removable)
- Zero Falls Inside Top of Hook Eye

Cat. No.	UPC No.	Packaging	Description	Length	Product Weight
58712	037103453181	Boxed	20 oz Plumb Bob, Solid Brass Outage	6 in	1.27 lb
150MM	037103105875	Boxed	570g Plumb Bob, Brass Outage	152 mm	1.27 lb